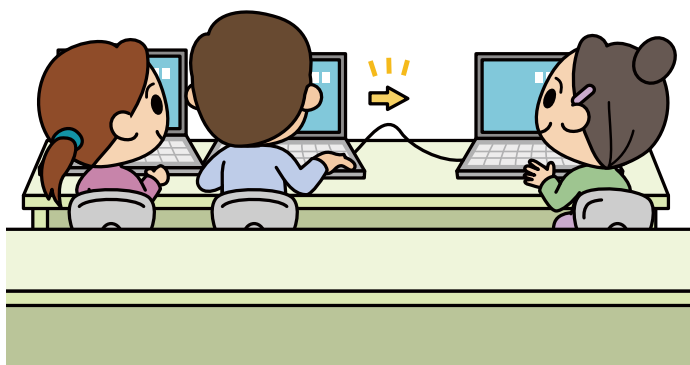


An Introductory Guidebook for Laptop Note-taking

Let's Try Laptop Note-taking!



For Beginners!

PEPNet-
Japan

Contents

What is Laptop Note-taking? 2	Useful Functions and Input Tips 19
A Quick Look at Laptop Note-taking	The Various Functions of IPTalk
Equipment and Connection Setup 3	For the Efficient Input
Setting up the Notebook PC	Solving Common Problems 30
Other Necessary Equipment and Accessories	Troubleshooting
Connecting the PCs to Each Other	References
Network Setting 6	
Setting the IP Address	
Connection Settings for IPTalk	
Trying out Laptop note-taking 14	
Laptop Note-taking with IPTalk	
Let's Try it out!	
Settings for notebook PCs of the Deaf or Hard of Hearing (DHH) students	



The connection between PCs isn't working!

If you are having trouble connecting your computers/setting up partner computers...

 P30

"I want to support as a laptop note-taker, but I am not sure what I am supposed to do..." In recent years, many such comments have shown up at the university support scene. In a university environment where the support for the Deaf or Hard of Hearing (DHH) students has been established with handwriting note-takes, we believe this is an indication that an increasing number of universities are considering more enriched support means like laptop note-taking. As a response to such wants, the Postsecondary Education Programs Network of Japan (PEPNet-Japan) released a booklet, "An Introductory Guidebook for Laptop Note-taking: Let's Try Laptop Note-taking!" in October, 2007. "Everyone should be able to start laptop note-taking even without the experts around!"-that is why we published this booklet. Thankfully, in the years following its release, we have received numerous inquiries from universities/institutes, as well as thank-you messages telling us, "Owing to your booklet, we have successfully started laptop note-taking!"

What follows are voices from readers: we want the textbook with the same contents for students when organizing training courses; we want a memorandum picking up just the essentials", etc. What you have in your hands is our answer to these comments – a careful selection of the minimum essence needed for starting laptop note-taking, all in one single booklet, whilst omitting the parts on applications from its popular predecessor. By deferring the details on setup instructions, network settings, and the explanations of other major hurdles to the scope of the original booklet, this booklet instead focuses on giving a compact and clear overview of the necessary knowledge that will be helpful at the actual support scene. It is our hope that this booklet can be brought to wide use by everyone who is to support with laptop note-taking.

September, 2009

The Postsecondary Education Programs Network of Japan (PEPNet-Japan)

What is Laptop Note-taking ?

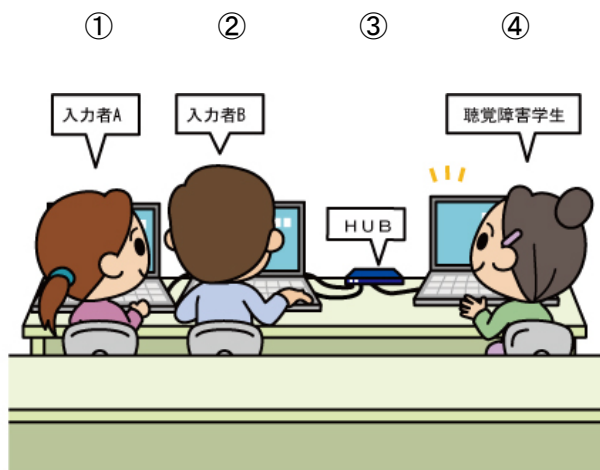
A Quick Look at Laptop Note-taking

Laptop note-taking by which audio information is delivered in the text form at the spot is an assistive tool developed for the DHH students. Audio information that can be heard in classes is input and visually presented to the DHH students through the use of computer just like handwritten note-taking which is the prominent support means in universities and junior colleges (indicated as universities hereafter).

Support with laptop note-taking can be done without specialized equipment, and it can get started by handling the commonly used PC and word processing software. However, by using specialized software, you can connect multiple computers through a LAN network to render more diverse support more flexibly.

Through a step-by-step explanation starting with the basics, this booklet will introduce efficient laptop note-taking methods that are tailored for DHH students.

The Support Scene



- ① Note-taker A
- ② Note-taker B
- ③ HUB
- ④ DHH student

Characteristics of Laptop Note-taking

[Pros]

- Larger amount of information can be captured than handwritten note-taking and other methods.
- Anyone can render support with a certain amount of training.
- It is easy to catch up with information even when the eyes have been off the screen, as information is kept displayed for a certain amount of time.

[Cons]

- The purchase of equipment incurs cost.
- Training of supporters takes time.
- Inputting equations, symbols and shapes can be difficult.
- Not suited for lectures involving much moving-around, like an outdoor training session.

Equipment and Connection Setup

Setting up the Notebook PC

Laptop note-taking makes use of multiple personal computers. Assigning general-use PCs is possible, but it may be more prone to problems like a setup; therefore, it is recommended that specialized computers be purchased for exclusive use.

Notebook PC



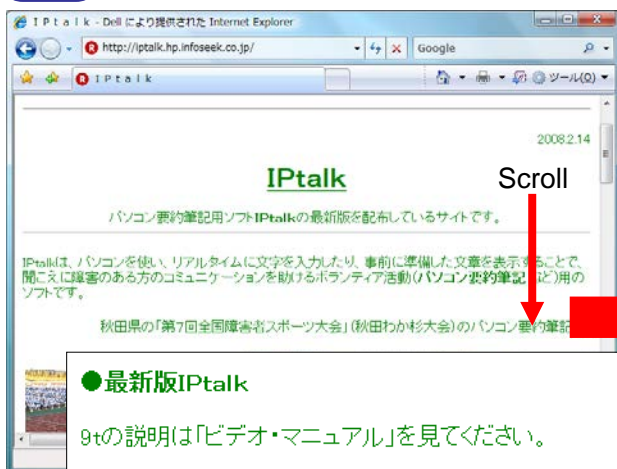
Computers being light to carry easily and with a familiar keyboard layout are recommended. The number of machines in need will depend on the layout of the system. Generally speaking, you want enough computers for each note-taker (2 ~ 3) + a DHH student (1).



Recommended Spec:
 CPU: Pentium 2 or later (or equivalent)
 OS: Windows 2000, XP, or later
 If an old computer is to be used, it is recommended that addition RAM be added, in order to ensure smooth scrolling.

Install IPtalk, free software, to the computer. The latest version of IPtalk can be downloaded for free at the page as follows: <http://iptalk.hp.infoseek.co.jp/>.







URL <http://IPtalk.hp.infoseek.co.jp/>



IPtalk is free software developed to assist DHH persons. (Author: Kurita Shigeaki). Continuously taking in opinions from those on the frontline, the developer is making frequent update to the software.

Other Necessary Equipment and Accessories

In addition, the accessories listed below are also needed.

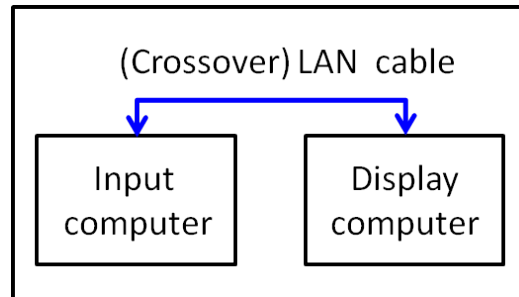
	<p>[Power Cord] Usually attached to the PC, power code is easily left out when running between classrooms, so please pay extra attention. Connectors between codes inadvertently unplugged; therefore, make sure everything is connected before using.</p>
	<p>[Multi-socket plug adapter] Must have enough outlets for all computers + HUB. When there are 3 note-takers, the adapter should have at least 5 outlets. Depending on the layout of the classroom, there may not be easily accessed to the power, so a plug adapter with a longer code is preferable.</p>
	<p>[LAN cable] Used to connect the computers to the HUB. Generally speaking, a "straight" cable that is commonly used to connect a PC to the internet will do the job. When connecting 2 computers directly to each other, a special "crossover" cable is needed. As the two types of cable look almost the same, it may be helpful to mark the crossover cable beforehand.</p>
	<p>[Switch HUB (indicated as HUB hereafter)] A typical HUB comes with a power cable, though there are also models that get power from a PC through a USB cable. Pick one that has enough connection plugs for all computers.</p>
	<p>[Projector] Used to show on screen the text typed in by the note-takers. While it is not commonly used in a classroom setting, when there are multiple DHH students, or when there are special events, it may come in handy.</p>
	<p>[VGA cable] (Analog RGB/D-Sub 15pin) Necessary for connecting the PC to the projector. It usually comes packed with the projector, but constraints on the venue may necessitate the use of a longer cable. A thinner cable rolls better and may be of higher utility.</p>

Connecting the PCs to Each Other

Next, let's connect the PCs to each other! The connection methods differ depending on whether there are 2 computers, or 3 or more computers.

When Connecting 2 PCs

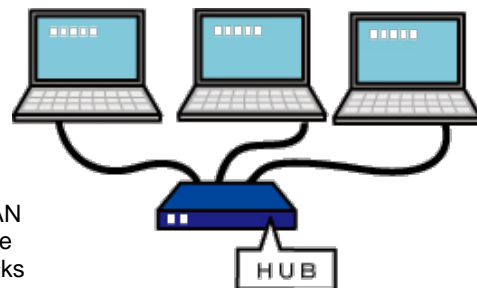
This is very easy as all you need to do is to connect the 2 computers through a (crossover) LAN cable. Note, however, that this limits the number of computers that can be connected to 2.



When Connecting 3 or more

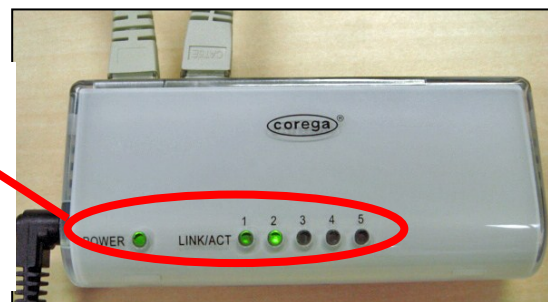
A HUB is used when connecting 3 or more computers. Connect all the computers to the HUB with a (straight) LAN cable, as shown in the picture below.

The same connection pattern applies even when the number of input computers is increased.

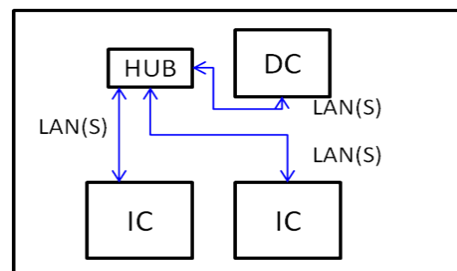


Connection port for the LAN cable. Insert the LAN cable to the HUB port until it clicks into place.

Power up the HUB and check the corresponding indicator lights of the connected ports are on.



The status of the connection finished. All computers are connected to the HUB.



DC: Display computer
 IC: Input computer
 LAN(S): LAN cable (straight)

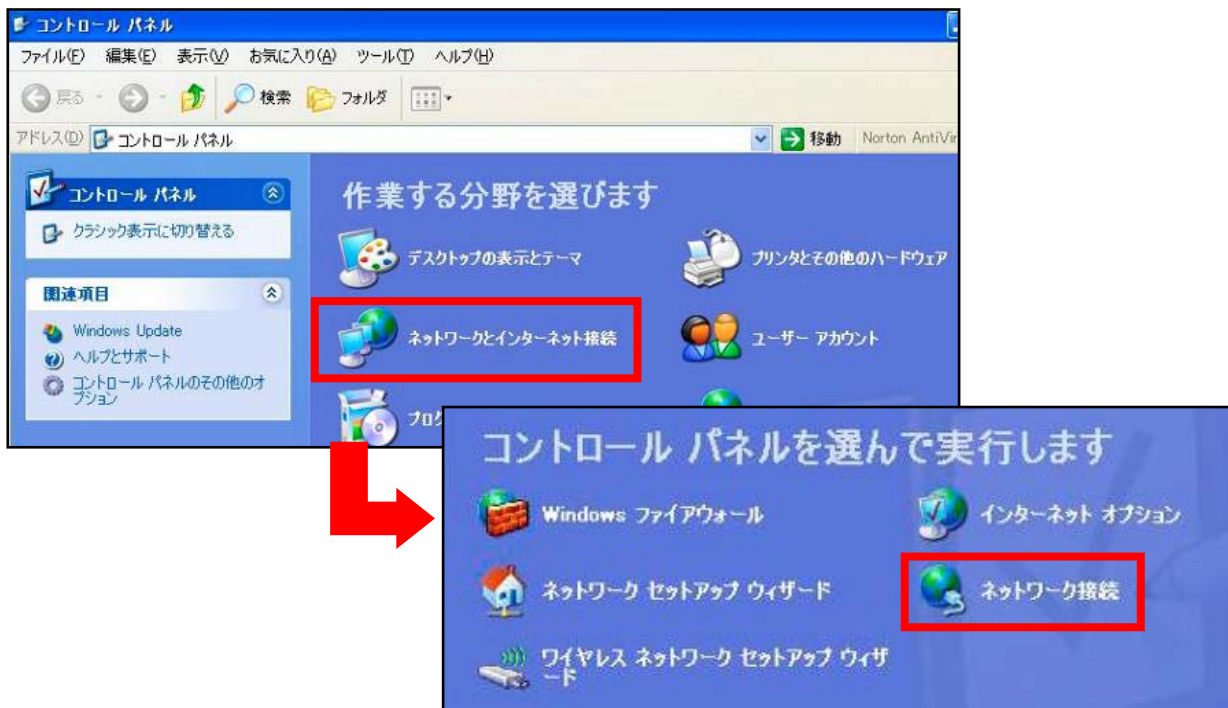
Network Settings

Setting the IP address

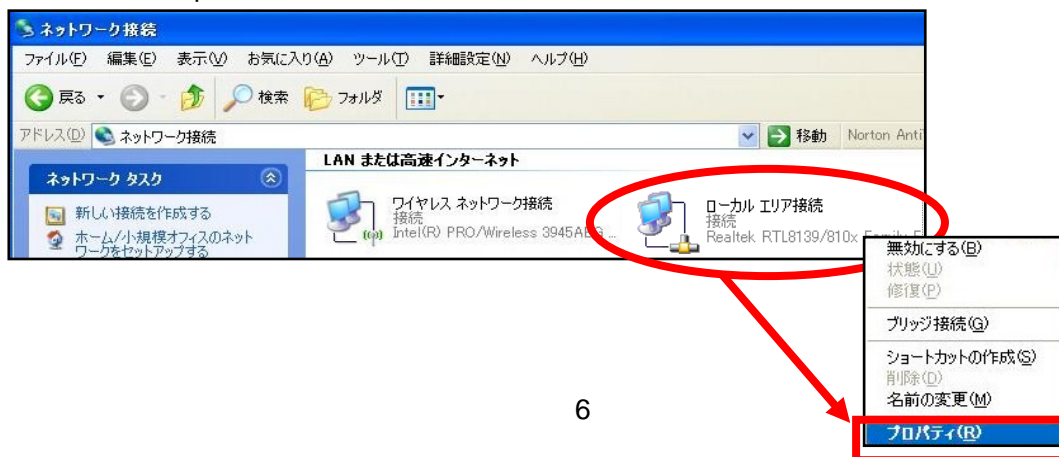
After connecting the computers to each other, next we need to do is to set up the IP address in order for the LAN connection to work. The IP address is a number, just like a telephone number, assigned to each computer in the network, so that it can be distinguished from other computers. Take note that the setup procedure is different between Windows XP and Windows Vista.

Setting the IP Address for Windows

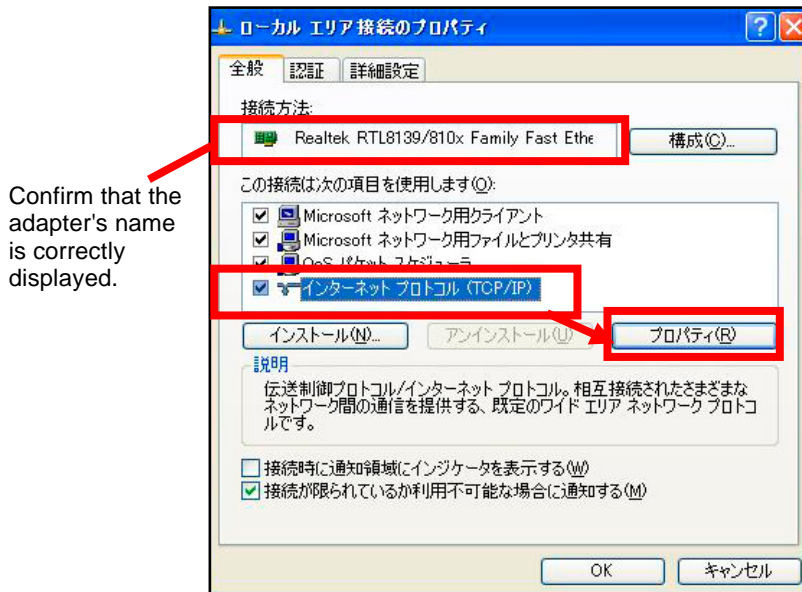
- ① □ Navigate into "スタート(Start)"->"コントロールパネル(Control Panel)"->"ネットワークとインターネット接続 (Network and Internet) ", and click on "ネットワークの接続(Connect to a Network)".



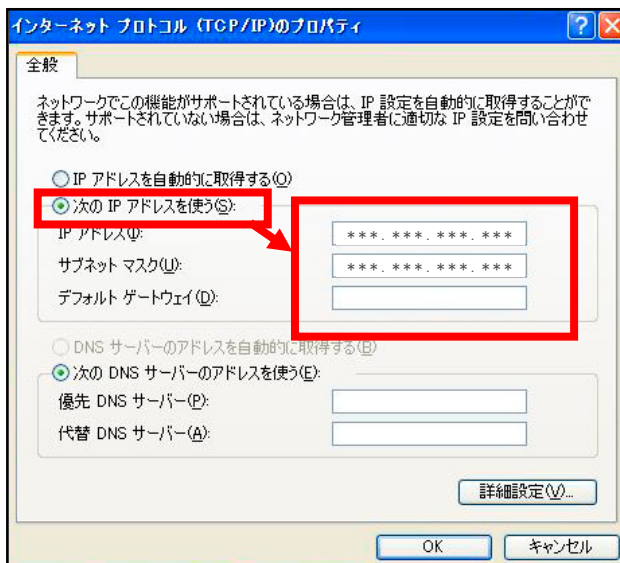
- ② Right-click on "ローカルエリア接続(Local Area Connection)" and pick "プロパティ (Properties) " on the menu.



- ③ Check that the name of the LAN adapter is shown under "接続方法(For Connection)". Then, click on "インターネットプロトコル (Internet Protocol(TCP/IP))" and click on "プロパティ (Properties)".



- ④ In the "インターネットプロトコル(TCP/IP)のプロパティ (Internet Protocol (TCP/IP) Properties)" window, pick "次の IP アドレスを使う (Use the following IP address)", and enter the IP address and Subnet Mask. Confirm by clicking OK.



If there are no particular restrictions, the following standard IP addresses can be assigned in the settings.

Class	IP address	Subnet Mask
A	10.0.0.0~ 10.255.255.255	255.0.0.0
B	172.16.0.0~ 172.31.255.255	255.255.0.0
C	192.168.0.0~ 192.168.255.255	255.255.255.0

The commonly used setting is "Class C" as shown below:

Same number for all computers
【Standard settings】
 IP address : 192.168.XXX.YYY
 Subnet Mask : 255.255.255.0
 Different numbers for each computer

XXX,YYY can be any number between 0~255

For the IP address, assign the same number to all computers up until the last column that is 255 in the Subnet Mask.

In the example above, enter the same number for XXX for all computers, and distinct numbers for YYY.

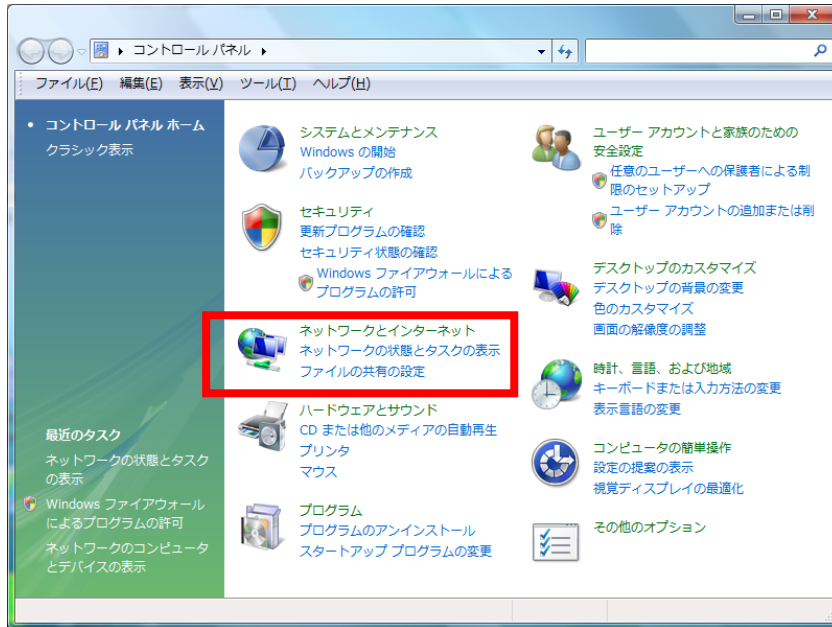
e.g.) PC1 192.168.1.1
 PC2 192.168.1.2
 PC3 192.168.1.3

... and so on

Changing these numbers will cause the computer to become incapable of connecting to the internet. If the PC used for laptop note-taking is to be used in other occasions, jot down the original settings so that they can be restored.

Setting the IP Address for Windows Vista

- ① □ Navigate to "スタート(Start)"->"コントロールパネル(Control Panel)"->"ネットワークとインターネット(Network and Internet)", and click on "ネットワークの状態とタスクの表示(View Network Status and Tasks)".



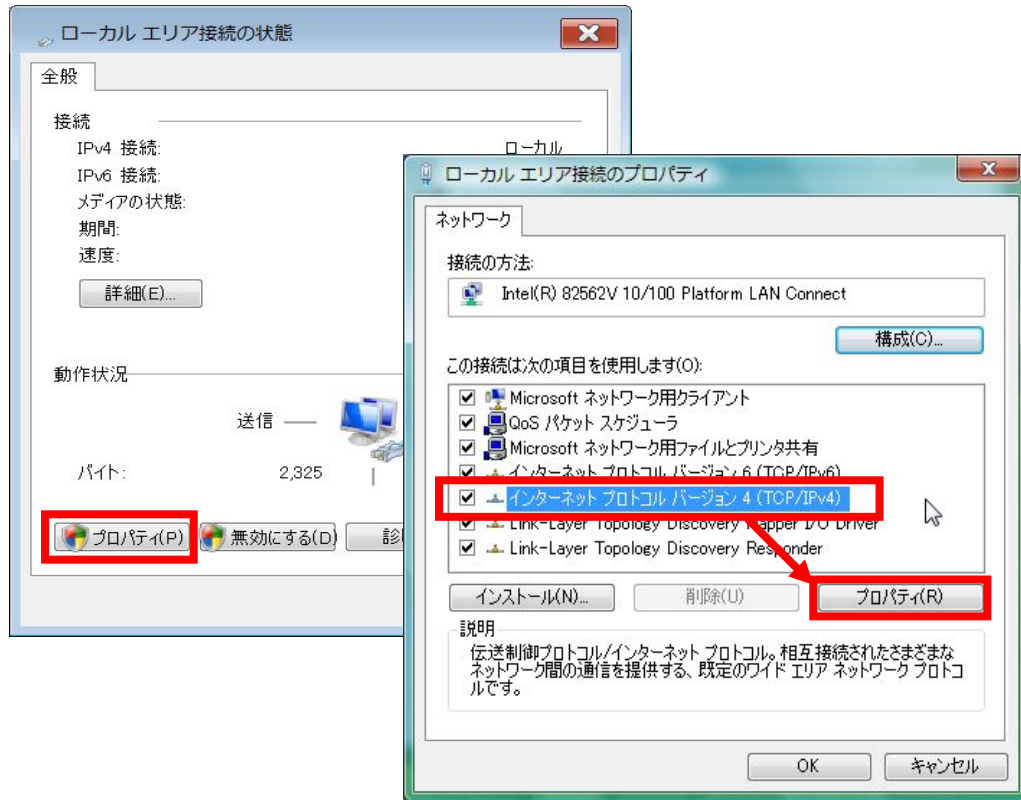
- ② This will open the "ネットワークと共有センター(Network and Sharing Center)". Click on "状態の表示(View Status)" under "ローカルエリア接続(Local Area Connection)".



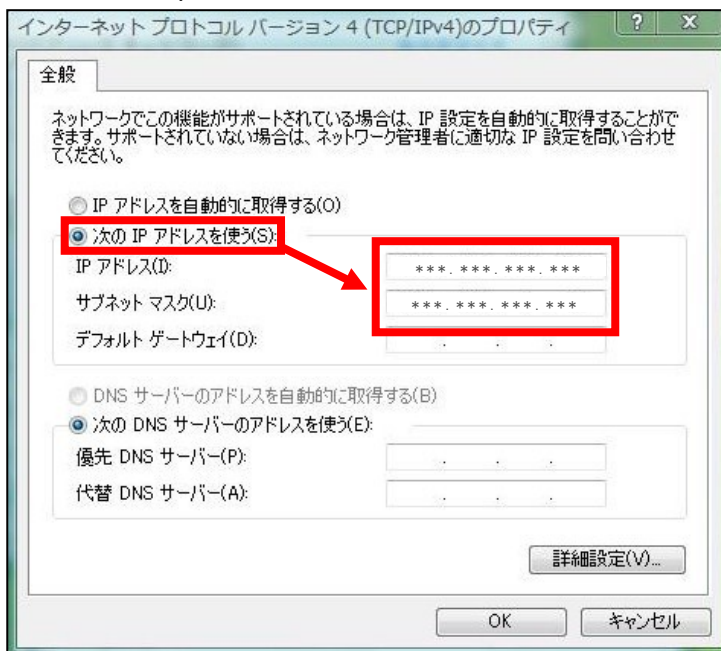
An "x" is shown here as the computer is not connected to the internet.

Click on "View Status".

- ③ Under "ローカルエリア接続の状態(Local Area Connection Status)", click on "プロパティ(Properties)" to open the "ローカルエリア接続のプロパティ(Local Area Connection Properties)" window. From here, pick "インターネットプロトコルバージョン4(TCP/IPv4)(Internet Protocol Version 4 (TCP/IPv4))" and click on "プロパティ(Properties)" below.



- ④ Choose "次の IP アドレスを使う(Use the following IP address)", enter the "IP アドレス(IP address)" and "サブネットマスク(Subnet Mask)", and confirm with "OK". The IP address entered here will also be used to set up IPtalk later, so it is important to remember the number.



➡ Refer to P7 for details on IP address setting.

Connection Settings for IPTalk

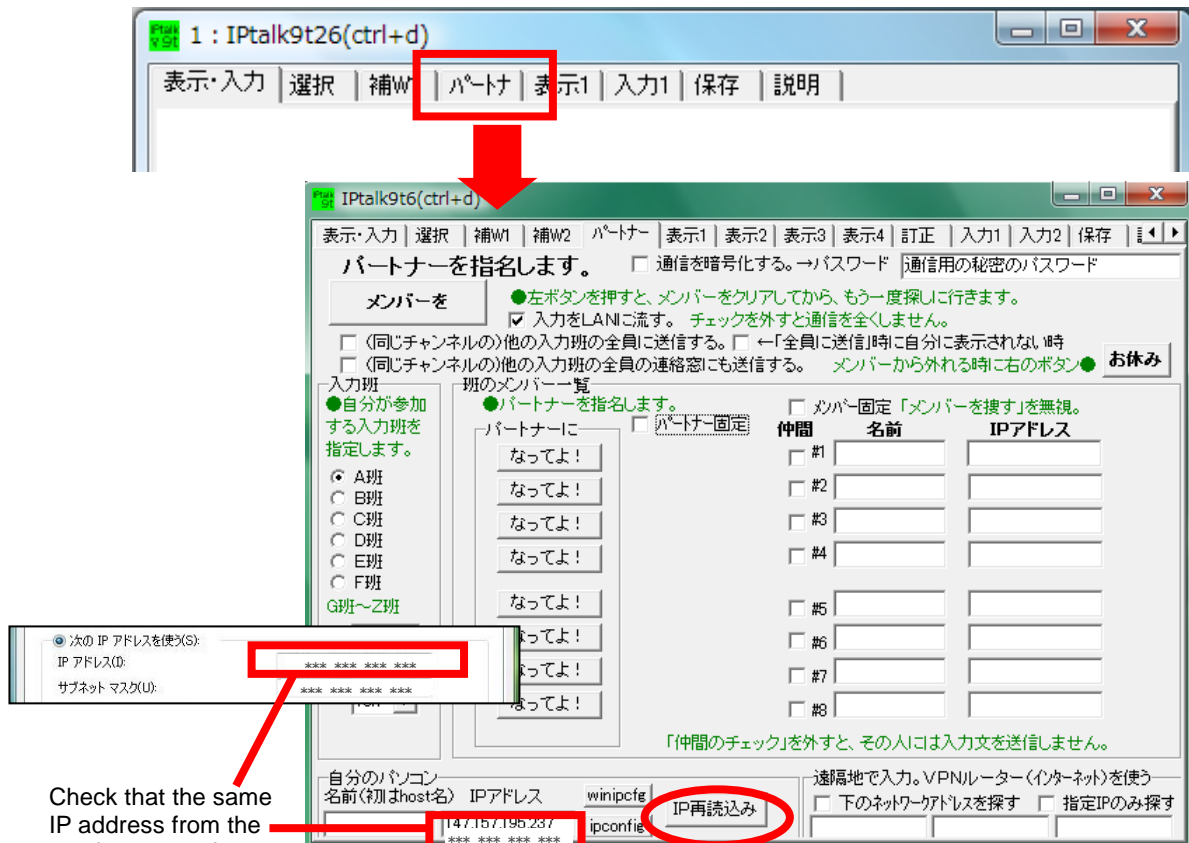
Next, let's set up the connection between IPTalk users.

- ① Double-click on the icon to boot up IPTalk.

The startup screen will be shown, and after that the home screen.



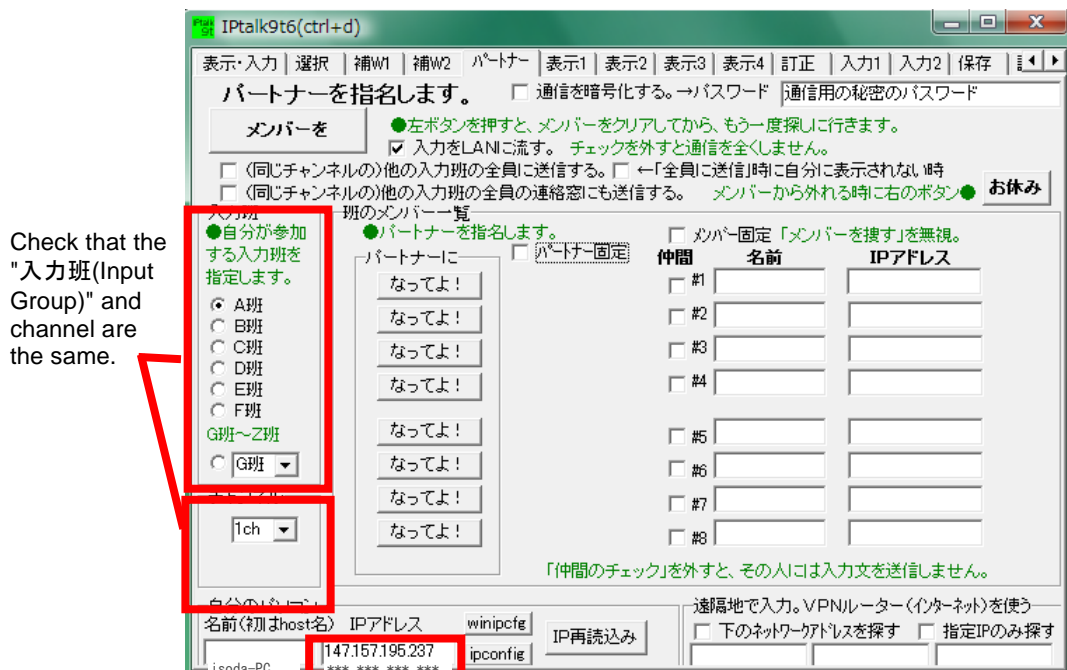
- ② Click into the **パートナー (Partner)** Tab, and make sure that the IP address set up in P6~9 is being correctly displayed on the window. If not, click on the "IP 再読み込み (Read in IP again)" button.



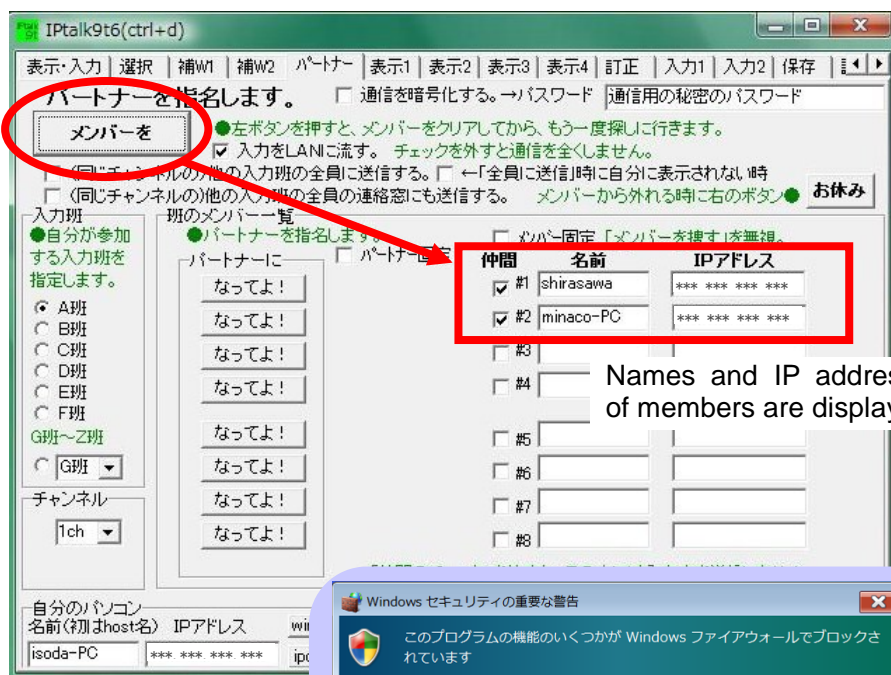
Check that the same IP address from the previous steps is displayed here.

If not, click on "IP 再読み込み (Read in IP again)" button.

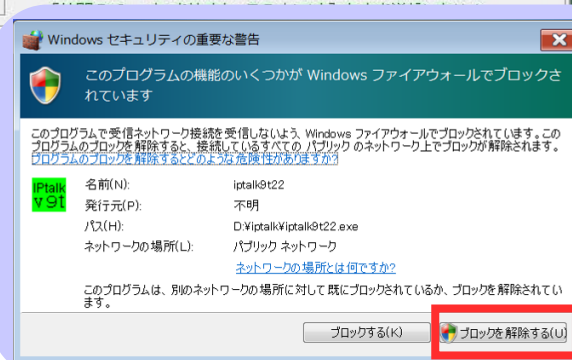
- ③ Among the interconnected computers, pick the same group and channel for the input computers. Input cannot be linked if either is different.



- ④ By clicking on "メンバーを探す(Search for Members)", people in the same network will have their names and IP addresses displayed under the member list.

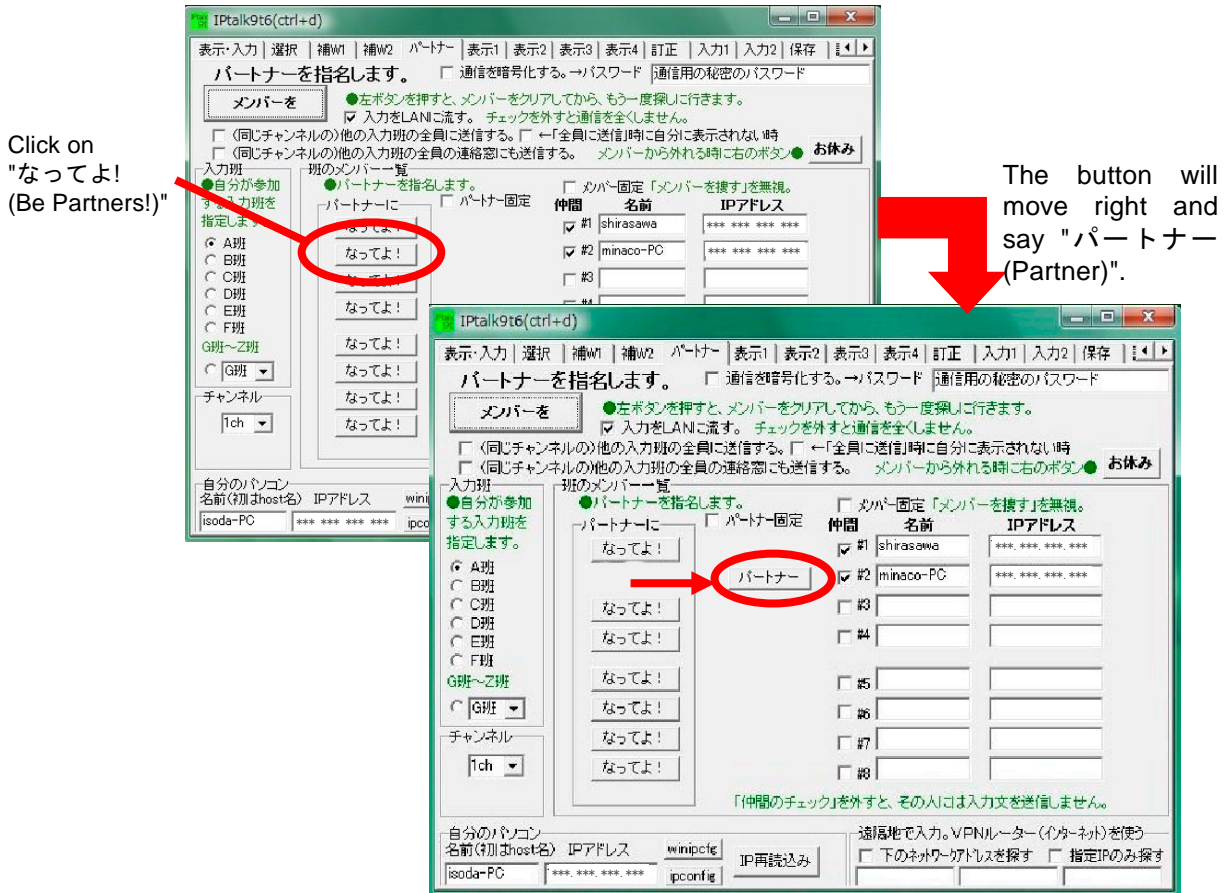


If no member is shown, click on "お休み(Rest)", and press "メンバーを探す(Search for Members)" again.

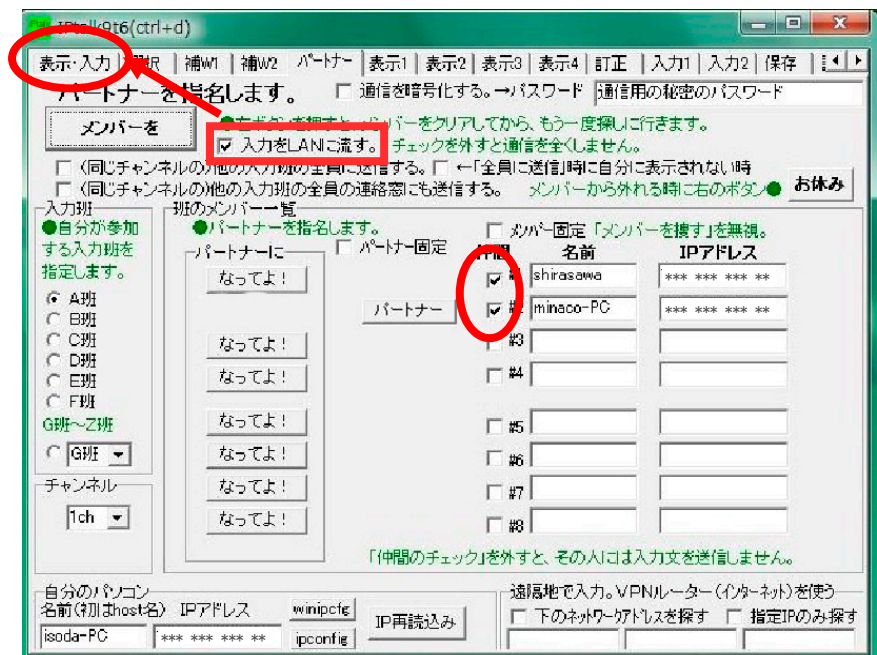


If a security alert shows up, choose "ブロックを解除する(Unblock)"!

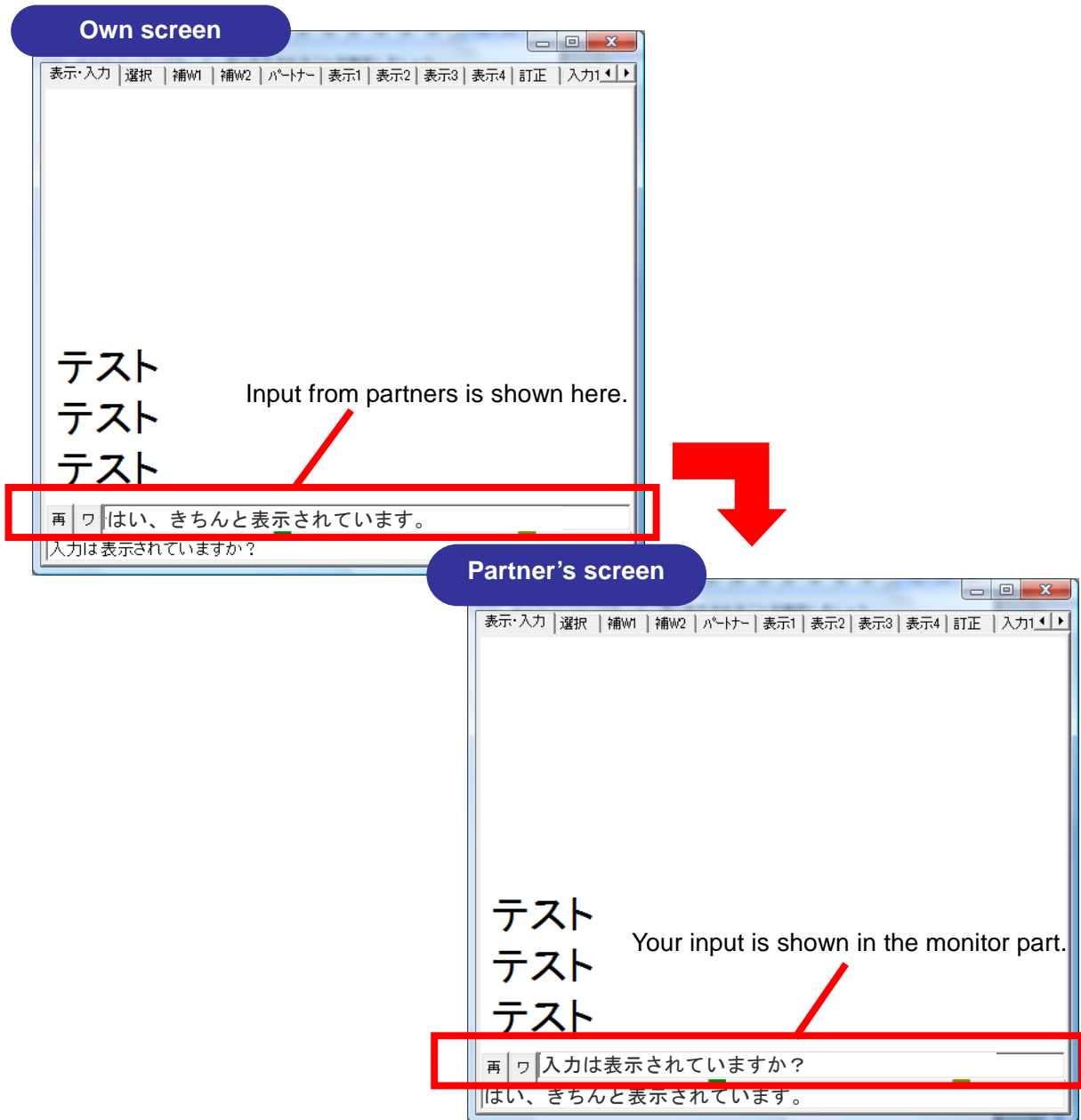
- ⑤ From the member list, choose people that you want to be the input partner by clicking "なってよ！ (Be Partners!)" button. If successful, the word "(パートナー)Partner" will be displayed in front of the member's name.



- ⑥ Finally, make sure to check the corresponding "仲間(Companion)" boxes as well as the "入力を LAN に流す (Send the input to LAN)" box, before returning to the **表示・入力** [Screen/Input] tab.



- ⑦ Confirm the input from partners is shown in the monitor part of your own screen.



With both parties confirmed to be in working condition, connection is completely setup. A check list for the setup is given below. When connection does not go well, refer to the solutions outlined in the following pages.

Checklist

- Is the IP address correctly displayed?
- Are the input group and channel the same?
- Are there more than 10 people trying to be in the same input group by mistake?
- Has the "なってよ！(Be Partners!)" button been pressed?
- Did you check the box under "仲間(Companion)"?
- Did you check "入力を LAN に流す(Send the input through LAN)"?

Trying out Laptop Note-taking

Laptop Note-taking with IPtalk

Now, let's try to use IPtalk to take notes! First, boot up IPtalk by double clicking on the icon. After the startup screen, you should see the screen below. This is the home screen of IPtalk.

Booting up IPtalk

Double-click

Startup screen

A few moments later, the home screen gets switched on.

Display part

Monitor part

Input part

The screen is divided into 3 major parts (Display, Monitor, and Input).

Input / Display parts

The part at the bottom is the Input part. You will be typing text within the frame here. By hitting Enter, the text input here will be sent through the LAN to the PC of the DHH students. It will also be displayed inside the Display part.

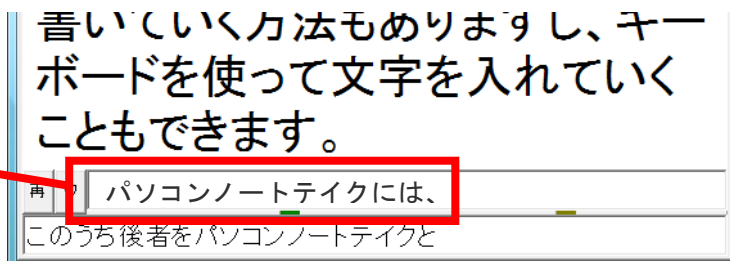
The bottommost part is the Input part. Hitting Enter on the keyboard will send the text here to the Display part above.

Enter

Monitor part

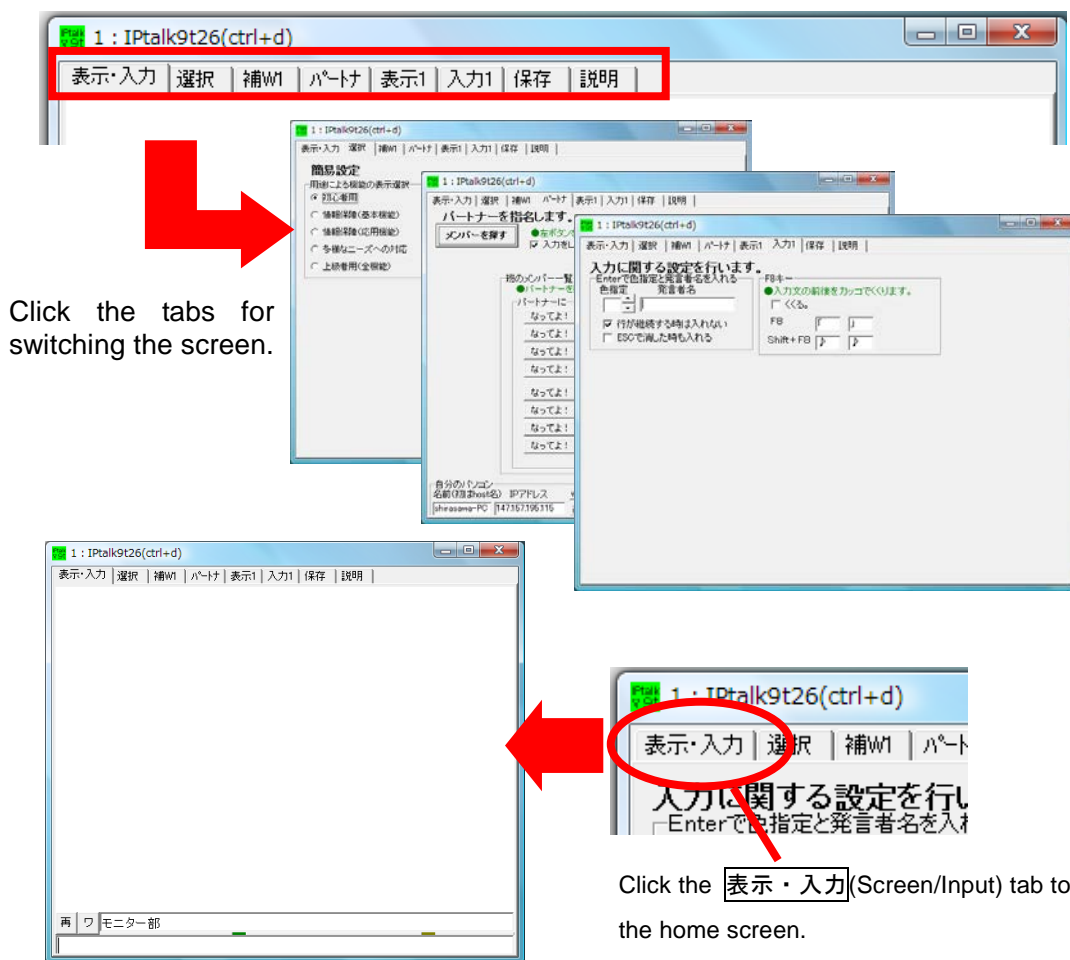
In the Monitor part, input from your partners connected through the LAN is displayed. By using this Monitor part, input from more than 2 people can be connected together.

Text input from your partners will be shown in the Monitor part.



Setting tabs

A number of small tabs are lined up at the top of the screen. Detailed settings like the screen color, font size, and partner settings can be done by switching among these setting tabs.



Click the tabs for switching the screen.

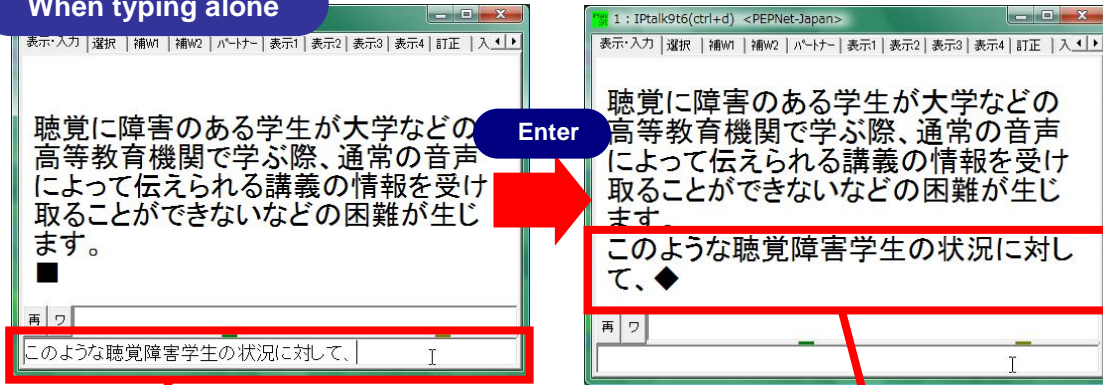
Click the **表示・入力**(Screen/Input) tab to return to the home screen.

Details on each tab will be explained from P19 onwards.

Let's Try it Out!

Now, let's try to actually type in a short passage. Move the cursor to the Input part, and type in the passage that can be heard. Hit enter, and notice how the input text is displayed in the Display part above.

When typing alone



Enter the text in the Input part..

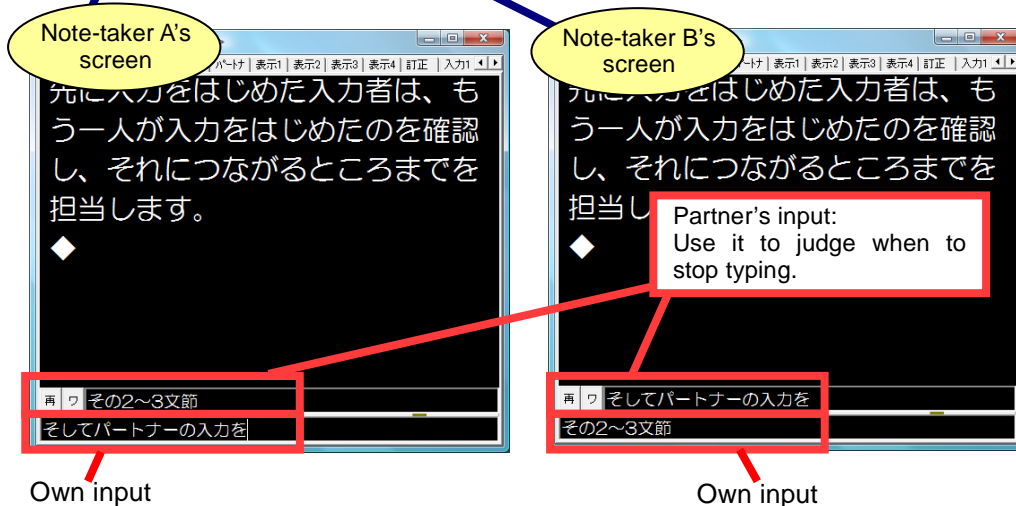
Hit Enter, and the input text moves to the Display part.

Now being familiar with the input procedures, try to work with input partners. By the relay input, 2 or more people complete the same text together. First, decide in advance whether you or your partner wants to go first. With note-taker A beginning typing, note-taker B should look at his/her Monitor part and start to type in the phrases that will come in 2~3 blocks later. Note-taker A should then take note of the beginning of note-taker B's block and type until his/her part links up with B's.

To relay input



With 2 computers connected together, the input of each other can be checked in the Monitor parts.



Own input

Own input

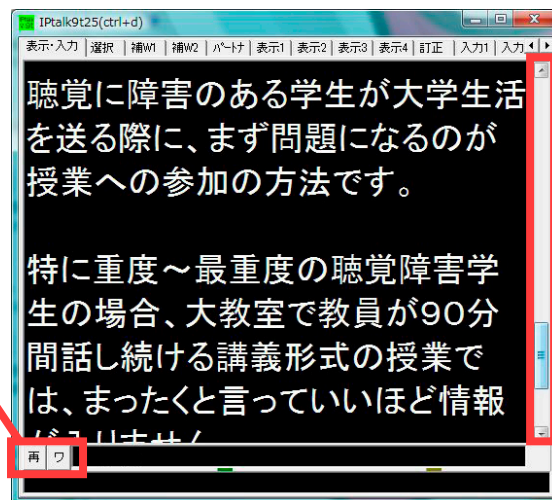
How did it go? Did you manage to type in sentences?

After getting used to the input procedures, practice with paying attention to the items in the checklist below:

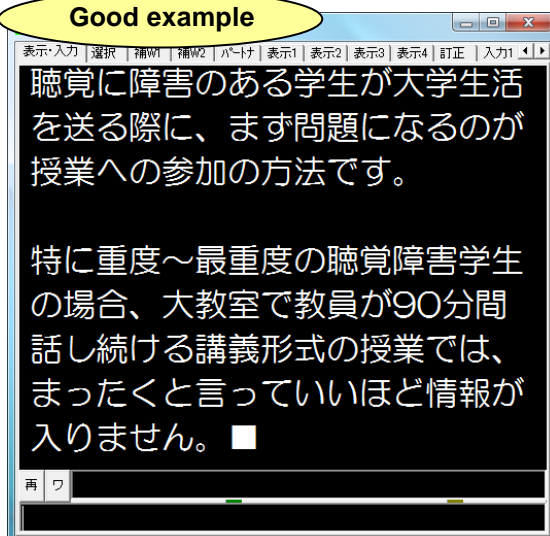
Checklist

- The passage blocks connect at the right place.
- Commas and periods are entered correctly.
- The passage is easy to read with adequate linefeeds.
- The correct information is being input, with no mistakes like incorrect spelling.

By clicking on the "ワ(Wa)" button in the Monitor part, you can switch into word processing mode. While in word processing mode, you can use the scroll bar on the right to check out old text which isn't displayed. When you want to start inputting again, remember to click on the "再(RE)" button.

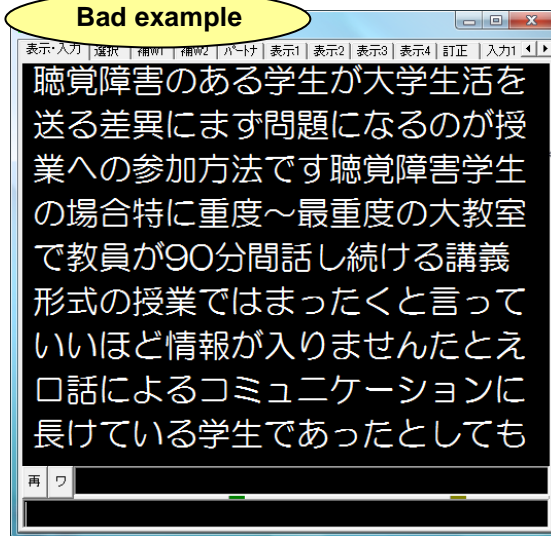


Good example



It is easy to read the passage with no input errors and with decent amount of punctuations and linefeeds.

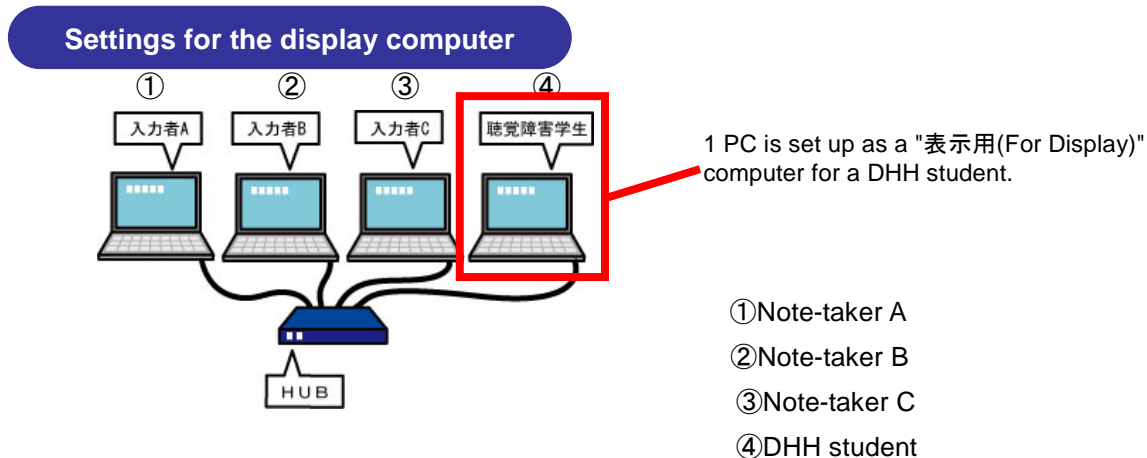
Bad example



Passages are hard to be read with the noticeable input errors and mistakes on relay timing. And also the lack of punctuations and linefeeds makes it hard to understand where the sentences break.

Settings for the PC of the DHH student

At the actual support scene, a PC for a DHH student is also needed. For this computer, only the input text will be shown, with the Input and Monitor parts hidden. When the input text needs to be projected on the screen, this PC is to be connected to the projector.



The steps for setting up are as follows:

- ① Choose "表示用(For Display)" under the "表示 1(Display 1)" tab.
- ② Check "マウスカーソルの非表示(Non-display of Mouse Cursor)" under "表示 2(Display 2)" tab, and return to the "表示・入力(Screen/Input)" tab.
- ③ Switch IPTalk into full screen mode, and press F1 to hide the menu and the frame.
- ④ Press F1 again to recover the functions.

入力人数は？

- 表示・入力ページの種類を指定します。
- 2人入力 入力部とモニター部が出ます。
- 1人入力 入力部のみが出ます。
- お知らせ(テロップ)を受信しない。
- 表示用 表示専用(F1で枠が消えます。)
- 警告、操作説明メッセージを表示する。

Pressing F1 hides the menu and the frame. Press F1 again to recover the function.

Choose "表示用(For Display)" under "表示 1(Display 1)" tab.

テスト
テスト
テスト

テスト
テスト
テスト

By using "the 8-person Monitor", the input text can be checked in real time.

Useful Functions and Input Tips

The Various Functions of IPtalk

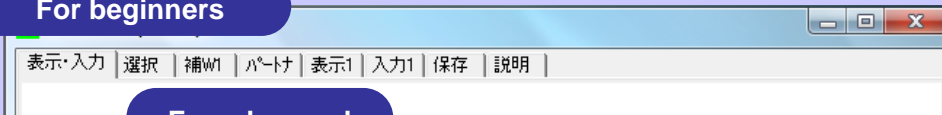
IPtalk includes a great number of helpful functions. Here, we will be picking up a few functions that will be helpful for laptop note-taking at the university scene, and explain them tab by tab.

Select Tab

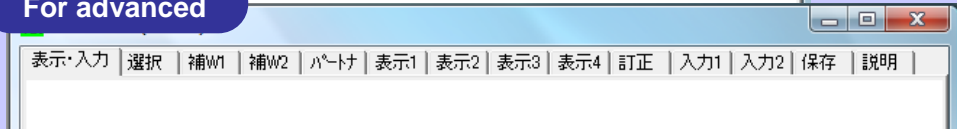
Here, you can select the functions that can be displayed in IPtalk. More functions will be shown when proceeding from Beginner to Advanced.

Functions for display can be selected accordingly.

For beginners



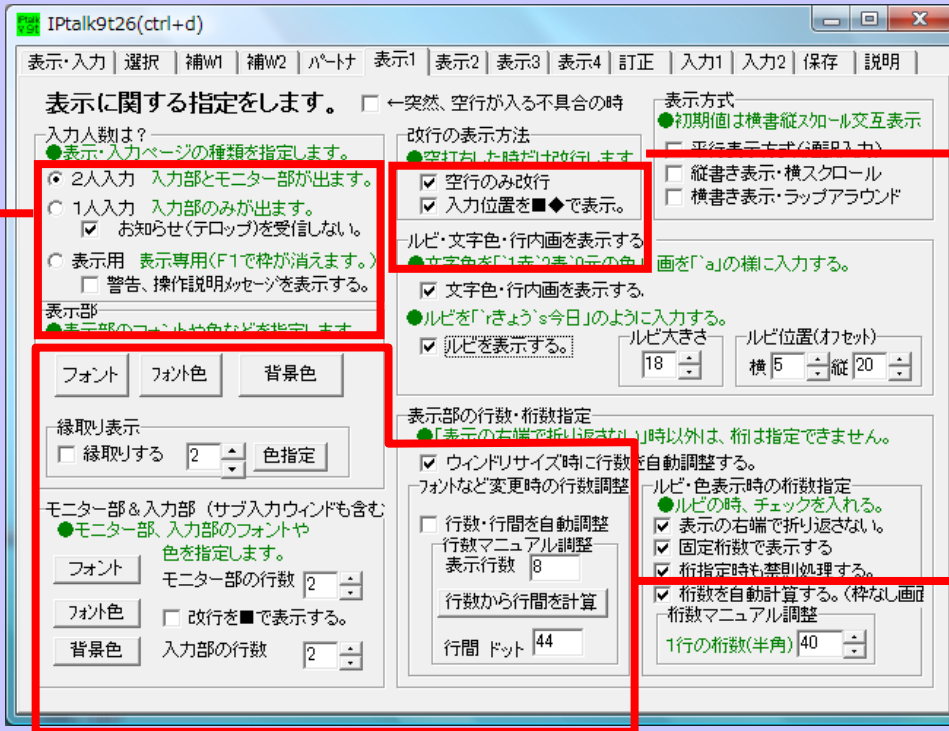
For advanced



Here, let's select "上級者用(For advanced users)". Compared to "初心者用(For beginners)", many more convenient functions are shown.

Display1 Tab

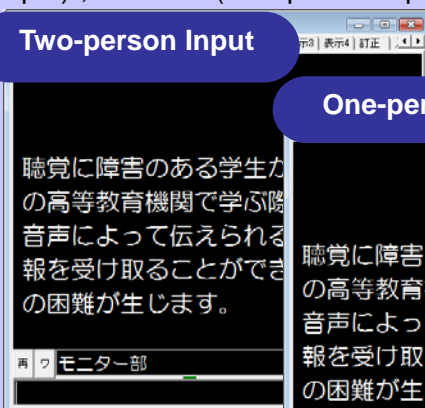
Here you will find basic options for the display settings like the Input/Display modes, the color of the Display part and so on.



Selecting between "入力用(Input mode)" and "表示用(Display mode)"

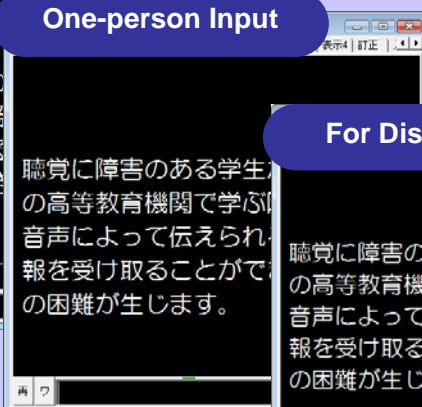
The Monitor and Input parts can be shown / hidden by selecting "2人入力(Two-person Input)", "1人入力(One-person Input)", or "表示用(For Display)".

Two-person Input



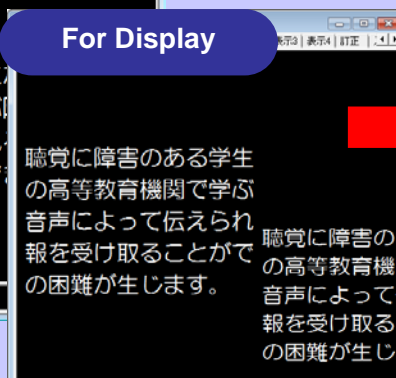
Input and Monitor parts are both shown.

One-person Input



The Monitor part is hidden while the Input part is shown.

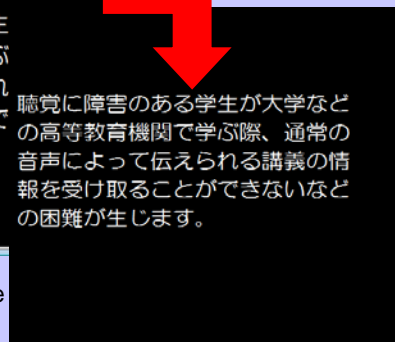
For Display



Only the Display part is shown. Choose this for the PC for the DHH student.

F1-key

The window frame can also be hidden.





Showing text without breaks

By the default settings of IPtalk, hitting enter will always start a new line, causing the passage to break up whenever some new text has been input. By checking "空行のみ改行 (Line Feed only on Space Typing)", newly input text will be appended to the previous text, making the passage easier to read.

Hit enter and the passage breaks to a new line.

Check "空行のみ改行 (Line Feed only on Space Typing)"

改行の表示方法
 改行した時だけ改行します
 空行のみ改行
 入力位置を■◆で表示。

The next text will come after this mark.

The text comes together.



Changing the font size and color

If the Display/Input/Monitor parts are hard to see, you can change the size and color of the font.

The display is hard to see

Font size and color settings

The settings for Input/Monitor parts can be done here. The number of lines to display can also be set here.

The display is now easy to see.

The settings for the number of lines and line spacing can be set here. You can either use the automatic settings, or click on "行数から行間を計算 (Calculate Line Spacing from Number of Lines)" after setting the number of lines.

表示部の行数・桁数指定

●表示の右端で折り返さない時以外、桁は指定できません。

ウィンドウサイズ時に行数を自動調整する。

フォントなど変更時の行数調整

行数・行間を自動調整
 行数マニュアル調整
 表示行数 8
 行数から行間を計算
 行間 ドット 48

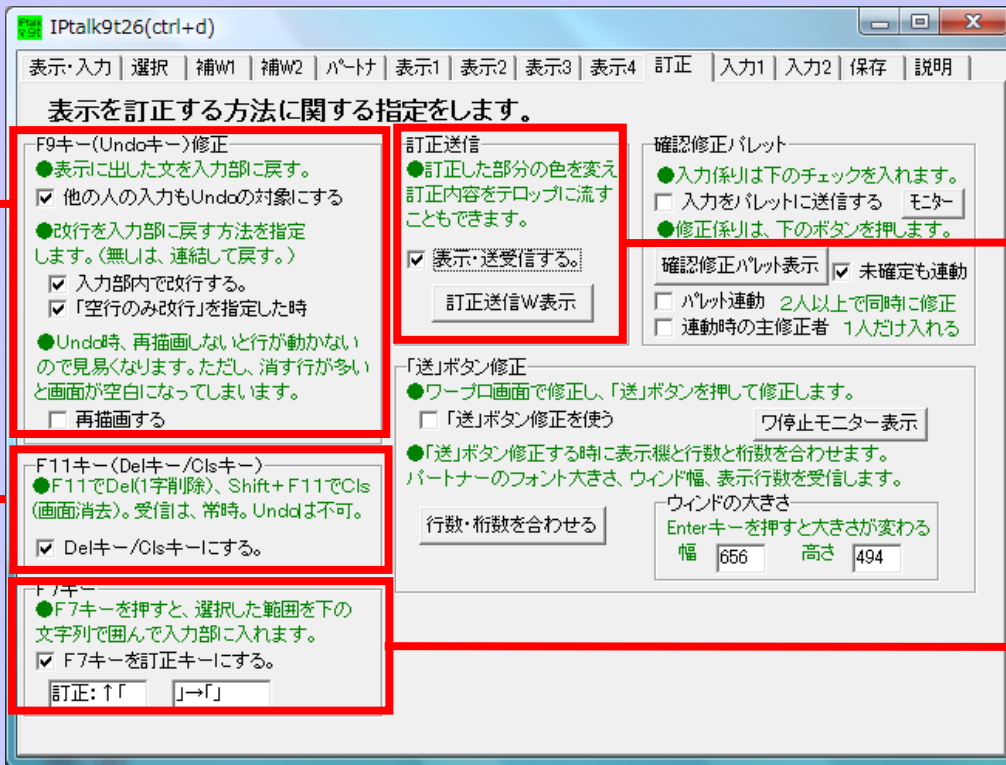
ルビ・色表示時の桁数指定

●ルビの時、チェックを入れる。

表示の右端で折り返さない。
 固定桁数で表示する
 桁指定時も禁則処理する。
 桁数を自動計算する。(特殊な画面
 桁数マニュアル調整
 1行の桁数(半角) 28

Corrections Tab

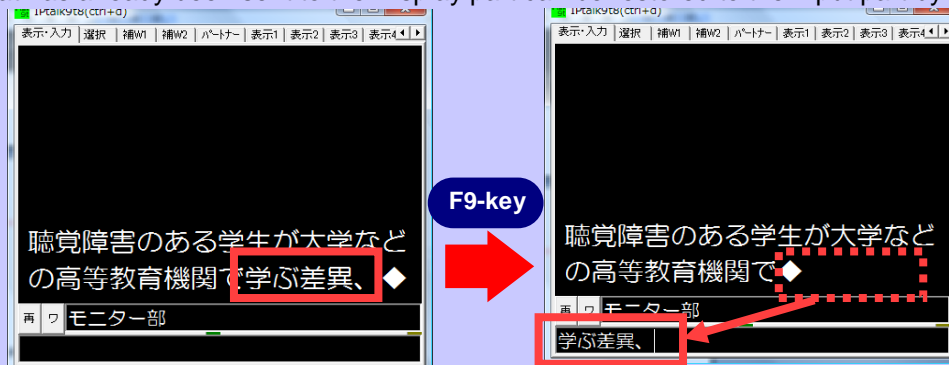
This tab sets the functions that can be used when making corrections to text that has already been sent to the Display part.



Delete the letter which is put up immediately ahead by pressing F9

Text that has already been sent to the Display part can be restored to the Input part by pressing

F9.



Delete the letter put up immediately ahead by pressing F11

Similarly, by pressing F11, one letter will be deleted from the Display part.





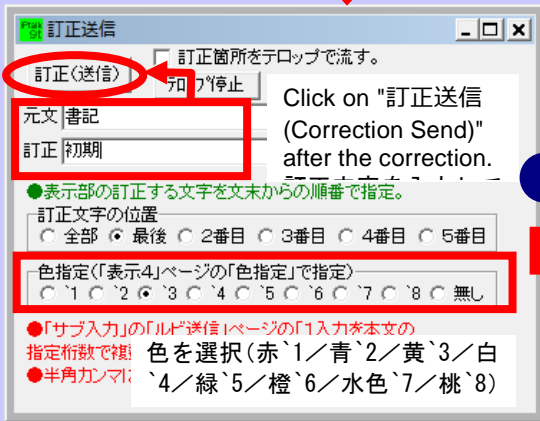
Correct text on screen through the "Send Correction" window

If there are mistakes to be corrected on the screen, correctors can use the "Send Correction" window to correct them.



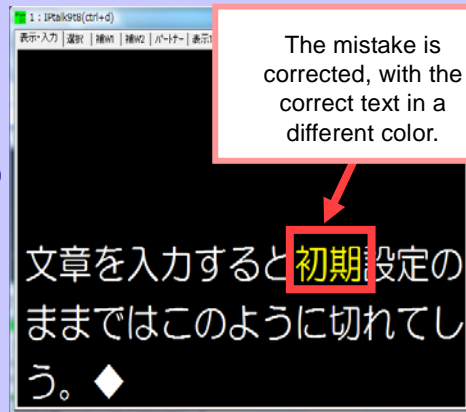
Click on "訂正送信 W 表示 (Display Send Correction W)" to open the window.

The font color of corrected text can be set in the "Send Correction" window. It may be a good idea for correctors to open the window in advance.



Click on "訂正送信 (Correction Send)" after the correction.

DSCW

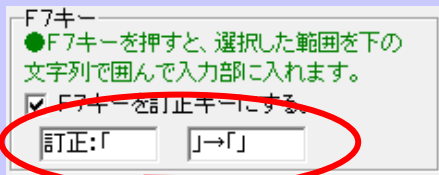


The mistake is corrected, with the correct text in a different color.

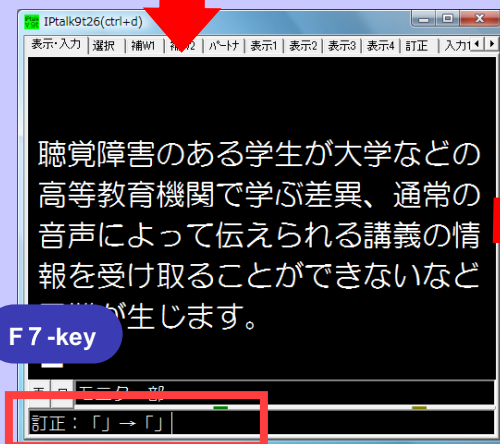


Press F7 to send out the correction

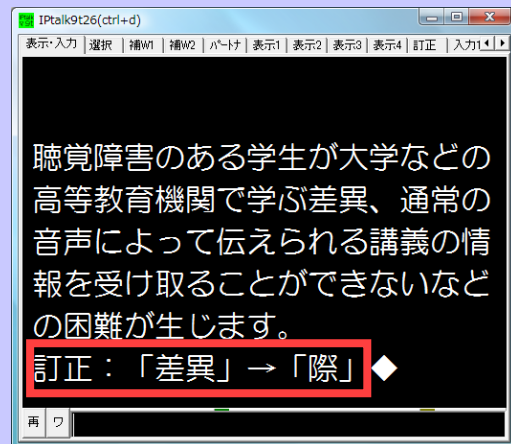
Even when the mistaken text has already been sent to the Display part, or when the text has already been rolled out of the display area, it can still be corrected by sending the correction.



Check the box next to "F7 キーを訂正キーにする (Use F7 as Correction Hotkey)", and type in the template for correction in the blanks.



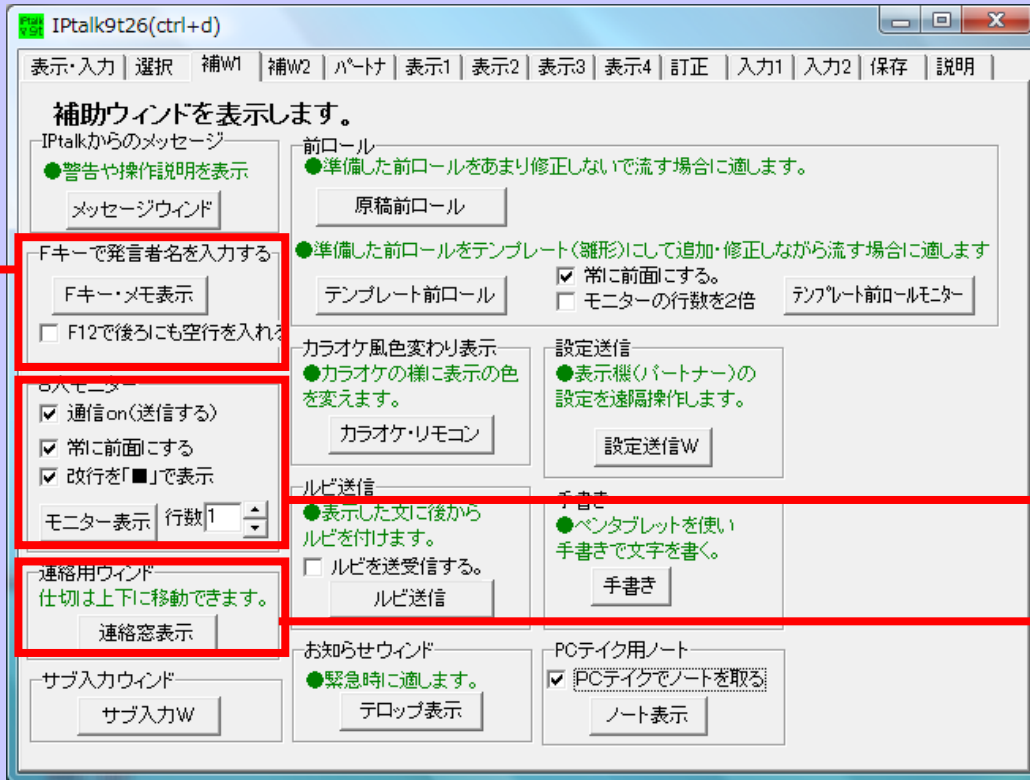
F7-key



Type in the correct phrase between 「 」 and press Enter.

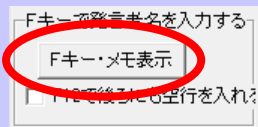
AuxiliaryW1 Tab

This tab is loaded with many convenient functions helpful for input, like Function key/Memo settings and Chat window. Pressing each of the buttons will open a small window for individual display.

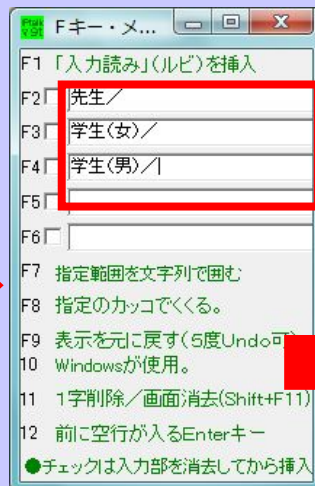


Simplified input of speaker's name

Long words and phrases like the speaker's name or book titles are easily input by using the function keys. It may be convenient to enter in the blanks in advance words that are expected to repeatedly show up.

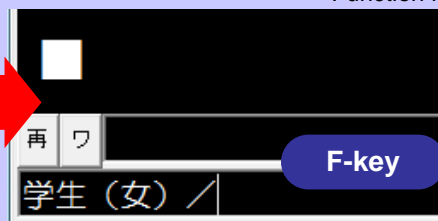


Click on "Fキー・メモ表示 (Function key/Memo display)"



Register in advance the names of the speakers.

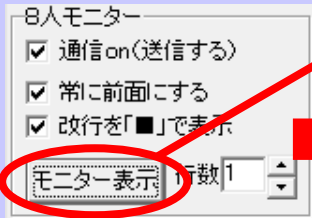
At the Input part, the registered text can be entered by pressing the corresponding Function keys.





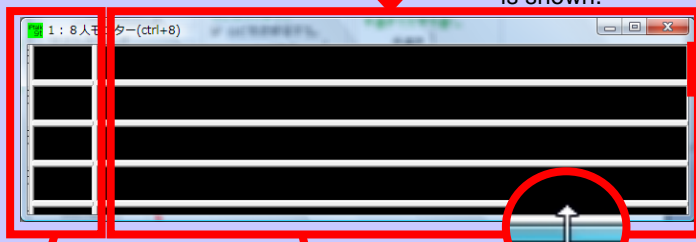
To display the state of input in real time

When there are more than two note-takers, or when you want to check out the text being displayed on the DHH student's screen, the "8-person Monitor" can be used. Here, all inputs from PCs in the same network can be displayed in real time.



Click on "モニター表示 (Display monitor)".

The "8-person monitor" is shown.

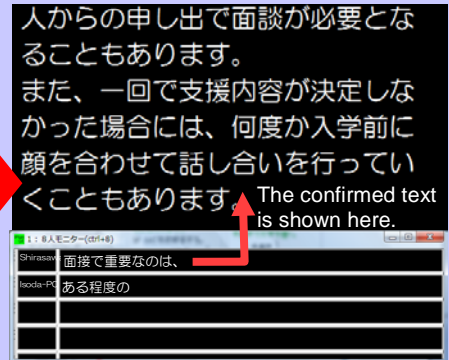


Member's names

The text being input

By pulling down on the frame, the setting screen can be viewed.

The actual display: The text being input will be shown in the 8-person monitor, and the confirmed text will be sent to the Display part.

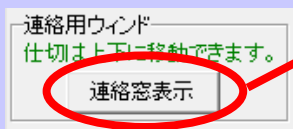


The confirmed text is shown here.

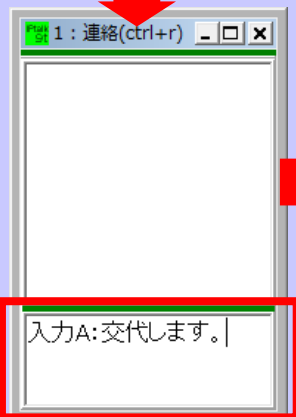


Coordinating the timing for relay

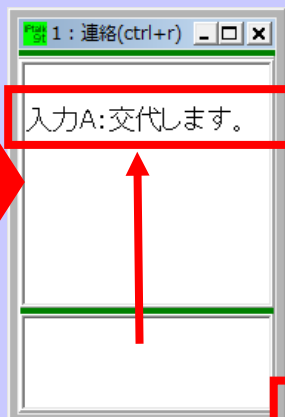
To coordinate the timing for the relay between inputs, or to convey any messages among note-takers, the chat-box called "連絡窓表示 (Display Chat Window)" can be used.



Click on "連絡窓表示 (Display Chat Window)".

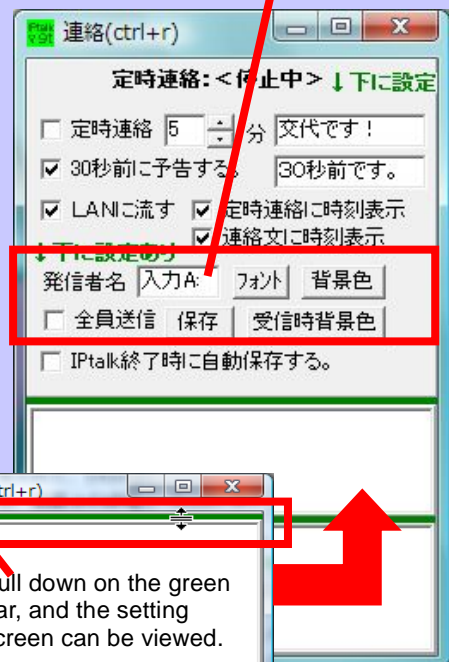


Type in text and press Enter



Text that has been entered will be sent to all members.

The name to use when sending messages, the background color when receiving messages etc. can be set here.

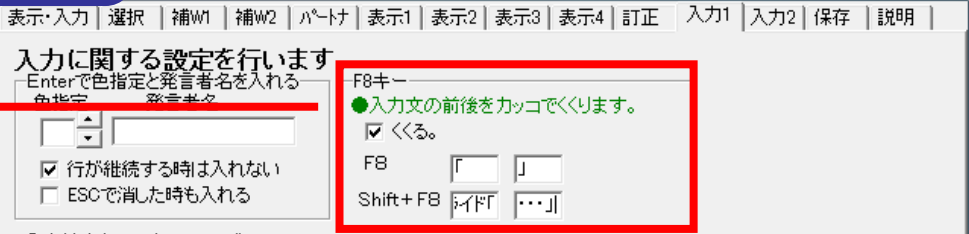


Pull down on the green bar, and the setting screen can be viewed.

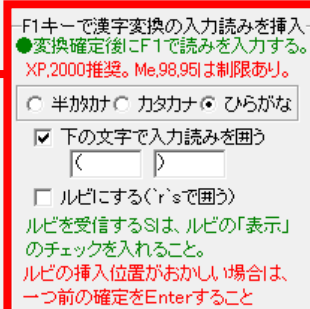
Input1 **Input2** Tab

Various settings on input can be made with these tabs. Automated input of parentheses etc. is possible.

Input1

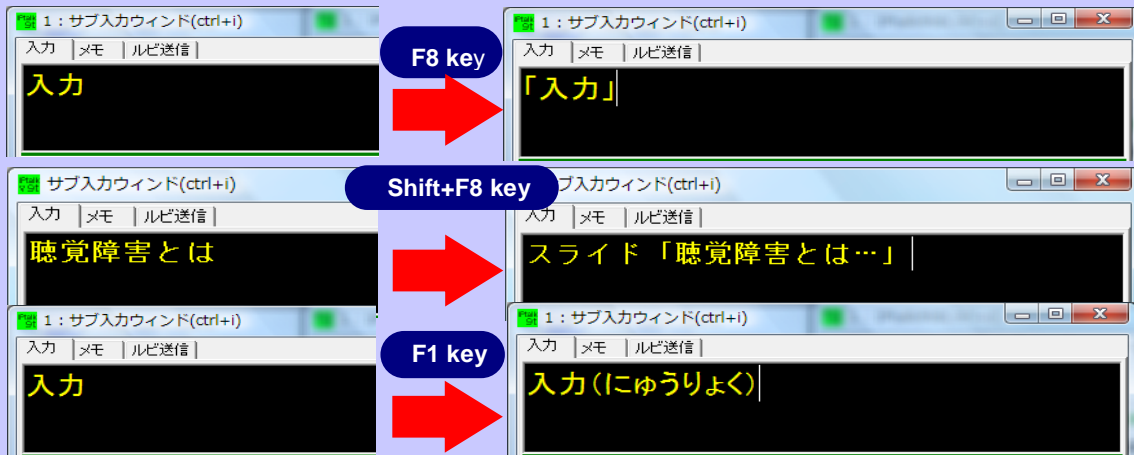


Input2



Automated insertion of 「 」 or ruby characters (Japanese indication for pronunciation)

With the box checked, phrases can be put in parentheses and ruby characters can be inserted automatically by pressing F8 and F1 respectively. Words like "Slide <.....>" can also be input automatically.



Save Tab

Here, logs and settings can be saved.



Saving settings for font and related functions

Display settings like font and background can be saved.

If you want the same settings to be applied next time

IPTalk is started, click on "起動時設定にする(Apply Same Settings on Startup)".

Click on "起動時設定にする(Apply Same Settings on Startup)".



Saving the input text

The input passages can be saved as a text file. Auto-save can also be enabled, so that the text will not be erased by mistake.

Click on "保存(save)"

保存 読込

Check here to enable auto-save.

IPtalk終了時に自動保存する。

Saved as text file

For the Efficient Input

In order to type fast and efficiently, it is important to make good use of IME (Japanese input software) functionalities. It is also a good idea to become familiar with correction procedures for relay input and with practice methods.



IME is the Japanese input software. Windows provides its own Microsoft IME, which is also joined by other offerings like ATOK (Just Systems).



Registering words and hotkeys for IME

Vocabulary like "the oral method" and "DHH", which may have troubles getting correctly converted, can be easily input by preemptively registering them in the dictionary. The same can be done for sentences that will surely show up, like "Do you have any questions?"

For MS-IME

Pick "ツール(Tool)" and then "単語の登録 (Register vocabulary)"

Enter the vocabulary and its pronunciation, and then click on "登録 (Register)" to register the word.

For ATOK

Choose the word to be registered, and press Ctrl + F7.



Ctrl + F7 key

In the vocabulary registration window, enter the pronunciation and click OK.

In addition, after entering the same word repeatedly with ATOK, candidates for conversion will show up automatically.

高等教育機関

First, enter "高等教育機関 (The Postsecondary-Education Institution)".

Tab key

After entering the same word a couple of times, candidates for conversion start to show up. When it is the right candidate, confirm by pressing Shift + Enter.

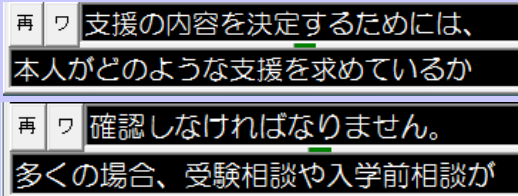
Other candidates are also displayed by pressing Tab key.



Tips for the relay input

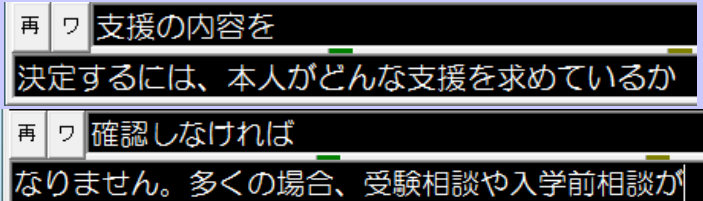
- The timing for the relay input varies with respect to the talking speed of the speaker and the typing speed of the note-takers. When the experiences are different between note-takers, let the beginner start first, so that the advanced taker can lead on with the relay.

【When input speeds are roughly the same】



Both note-takers type and relay at the same timing.

【When the typing speeds differ】



Let the beginner type first and the advanced taker should observe and lead the relay accordingly.

- When the relay does not go well, producing in phrases in the wrong order, each note-taker can press F9 to restore the text back to the Input part. They can then re-enter the phrases in the right order.

The input is in the wrong order!

F9 key

F9 key

Each phrase is restored to the Input part by pressing F9 once.

Re-enter with the right order



Points to note when inputting

- Good relay input requires techniques in touch-typing. To practice touch-typing, typing practice software that is enjoyable and at the same time practical is recommended. After warming up to typing, it may be a good idea to practice by listening to music and lecture tapes.

【Examples of typing practice software】

Perfect Key Master Holon Inc. (around 5000 yen)
http://www.holonsoft.co.jp/products/edu_o/perfect/index.html
 Typing practice software offers you from the basic level.
 Practices range from home position training to training by games.

Ozawa-Ken (Free software/Developed by Higo)
<http://www.higopage.com/ozawa-ken/>
 This typing practice game can be downloaded for free. Having a variety of levels, even beginners can enjoy themselves.



There is also a load of other free software.

Solving Common Problems

Before familiarity with the network settings, it is common to run into troubles like, "I just can't get through IPtalk partners!" Here, we will cover some of the troubles that may come up when connecting IPtalk, as well as the solutions.

Troubleshooting

The partner's input is not shown in the Monitor part!

Open the **Partner** Tab.
Is your partner being displayed under the member list?

No **Yes**

Understanding the cause of the trouble is necessary before we come up with a solution. First, follow the chart below and try to figure out from where in the network the problem comes about. Each of these problems will have the solution discussed in details in the following pages

The partner is not shown under the member list!

Press on "IP 再読み込み(Read in IP Address again)".
Is your IP address being shown correctly?

No **Yes**

10.14.1.1 is shown as the IP address!

2 addresses are being shown!

Is the correct IP address being selected?

Another IP address is being shown!

- Is the Wireless LAN on by mistake?
- Is the IP address set up correctly?

☞ The most important thing here is making sure that DHH students can be rendered by capturing correct information. When all else fail, consider alternate methods, like switching back to one-person input, or resort to handwritten note-taking.

- Did you press on the "なつてよ！ (Be partners!)" button?
- Did you check the box that says "入力を LAN に流す (Send the input to LAN)"?
- Did you check the box under "仲間(Partner)"?



- Have you become a partner with somebody else by mistake?
- Has your partner already become a partner with somebody else by mistake?
- Have you put the check in the "パートナー固定 (Fix Partners)" box by mistake?

- Did you press on the "Search for Members" button?
- Are you in the correct input group/channel?
- Did you check the "メンバー固定(Fix Partners)" box by mistake?
- Have you connected more than 10 PCs in the same input group by mistake?
- Did you enter the correct subnet mask?
- Are you connected with the same HUB?
- Is the firewall of anti-virus software enabled by mistake?

Open "ネットワーク接続(Network Connection)".
Is "Local Area Connection" enabled?



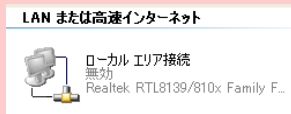
No

Yes

- Is the IP address correctly set up?



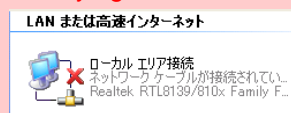
"ローカルエリア接続(Local Area Connection)" has been disabled!



- Right-click and choose "有効(Enable)".
- Is the IP address correctly set up?



It is saying "Network cable unplugged"!



Check that the cables are connected.

- Is the LAN cable fully inserted?
- Is the HUB having power?
- Is the power block connected to a power outlet?
- Is the power outlet switched on?
- Is the LAN cable functioning?
- Is the LAN cable connected to the HUB's UPLink port by mistake?



References

Information on laptop note-taking can also be found in organizations like the local laptop note-taking societies and note-taking staff associations. In addition, operational manuals that explain the different functions of IPTalk are also available for sale, and can serve well as a reference.

- IPTalk is distributed here: <http://iptalk.web.infoseek.co.jp/>
Updates are frequent, so make sure to check back periodically.

- References:



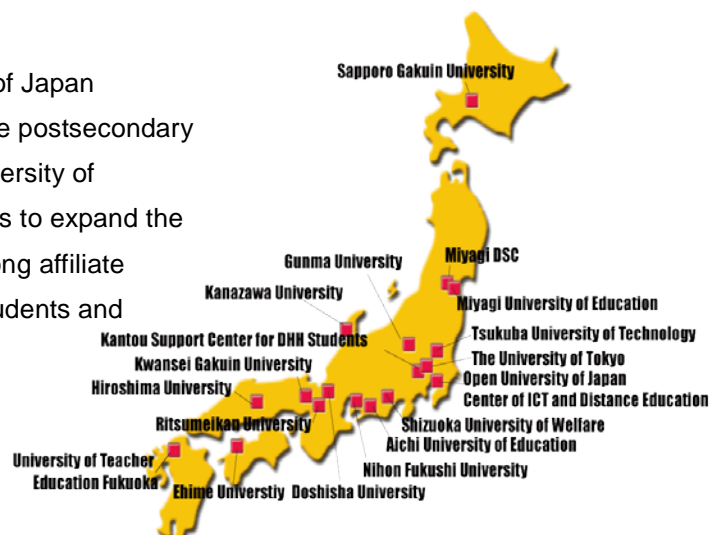
- An Introductory Guidebook for Laptop Note-taking
Let's Try Laptop Note-taking! For Beginners!



- An Introductory Guidebook for Laptop Note-taking
Let's Try Laptop Note-taking!
<http://www.pepnet-j.org>
Full version of the Guidebook of "For Beginners! " For universities trying to start laptop note-taking for the first time, this booklet explains in details the major hurdles, troubleshooting, and so on.

The Postsecondary Education Programs Network of Japan PEPNet-Japan

The Postsecondary Education Programs Network of Japan (PEPNet-Japan) is a network set up among multiple postsecondary education institutes, at the call of the Tsukuba University of Technology, in October, 2004. PEPNet-Japan seeks to expand the national support infrastructure by coordinating among affiliate universities/institutes that are taking in the DHH students and actively providing them with support.



**An Introductory Guidebook for Laptop Note-taking
Let's Try Laptop Note-taking! -English version-**

**For
Beginners!**

Published in July, 2016

Published by the Research and Support Center on Higher Education for the Hearing and Visually Impaired, Tsukuba University of Technology

(The Project of the Higher Education Center for the Persons with Disabilities)

English translation by HOSONO Masako, Academic Advisor, Tsukuba University of Technology

Editorial coordination by ISODA Kyoko, Research and Support Center on Higher Education for the Hearing and Visually Impaired, Tsukuba University of Technology, and MATSUBARA Yumeka, Tsukuba University of Technology

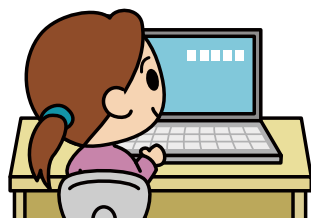
Research and Support Center on Higher Education for the Hearing and Visually Impaired, Tsukuba University of Technology

Office of the Higher Education Center for the Persons with Disabilities

〒305-8520 4-3-15 Amakubo, Tsukuba, Ibaraki

※This work is part of the Academic Advisory Activity for Language Teaching in the Project of Educational Joint Usage Center funded by the Ministry of Education, Culture, Sports, Science & Technology in Japan.

This booklet is the English version of “Yattemiyo! Pasokon-Nototeiku” published by the Post-Secondary Education Programs Network of Japan and edited by SHIRASAWA Mayumi and ISODA Kyoko.



An Introductory Guidebook for Laptop Note-taking
Let's Try Laptop Note-taking!

For Beginners!